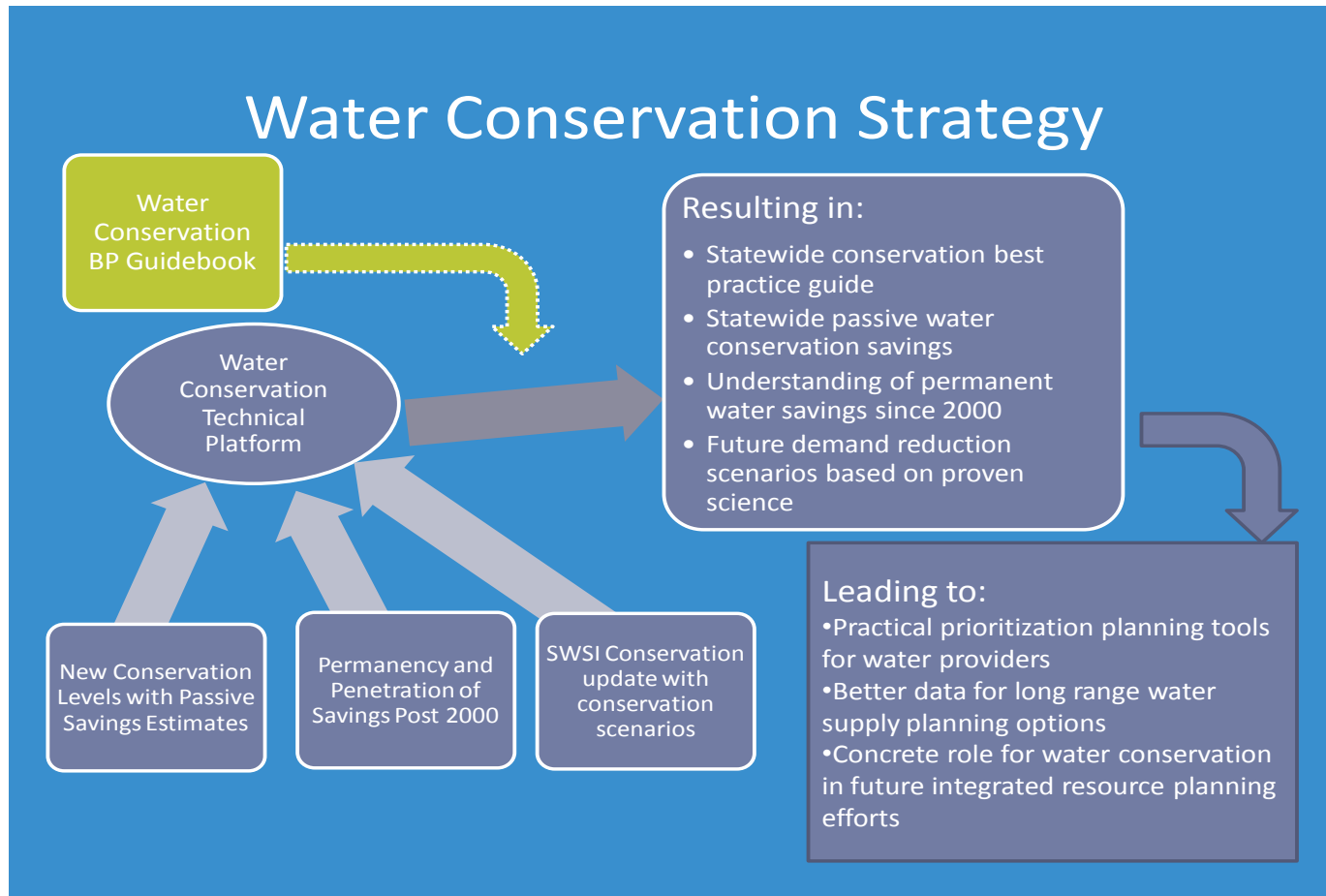


CWCB Water Conservation SWSI Update

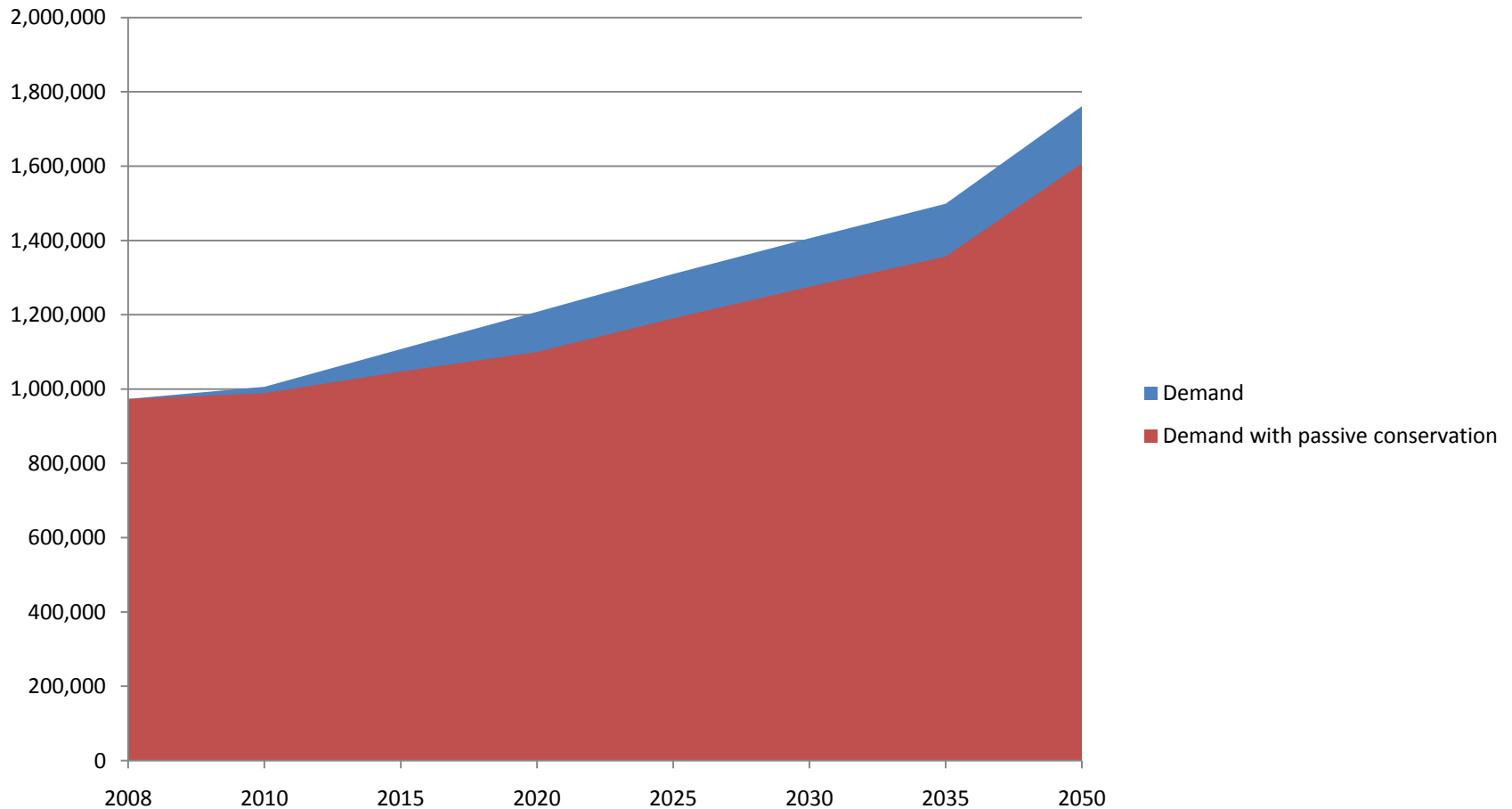
CWCB Board Workshop

July 20, 2010

Water Conservation Strategy



Effect of Passive on Future Demand

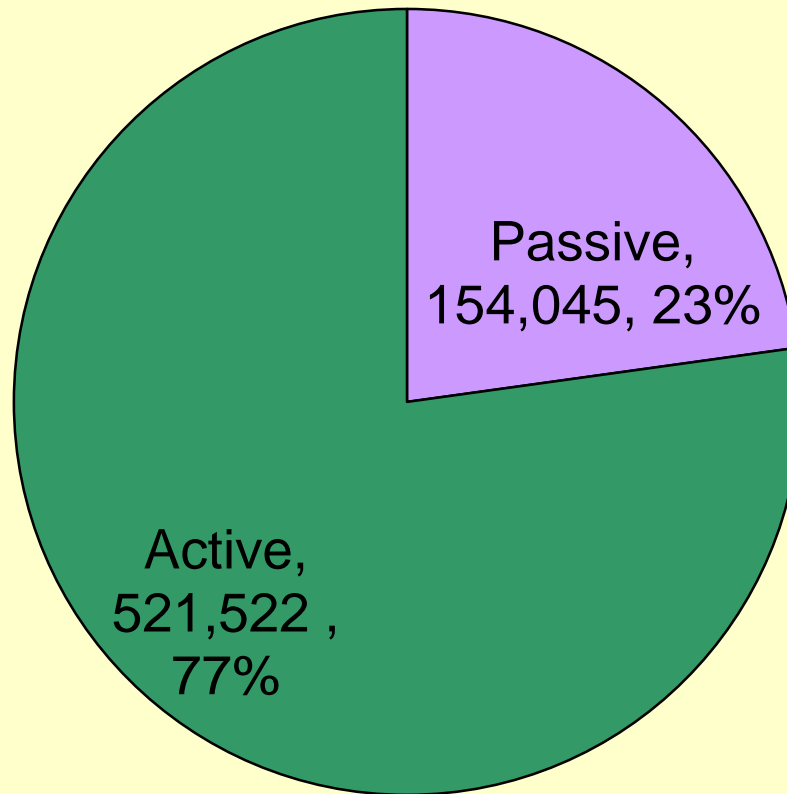


Comparison of SWSI Forecasts

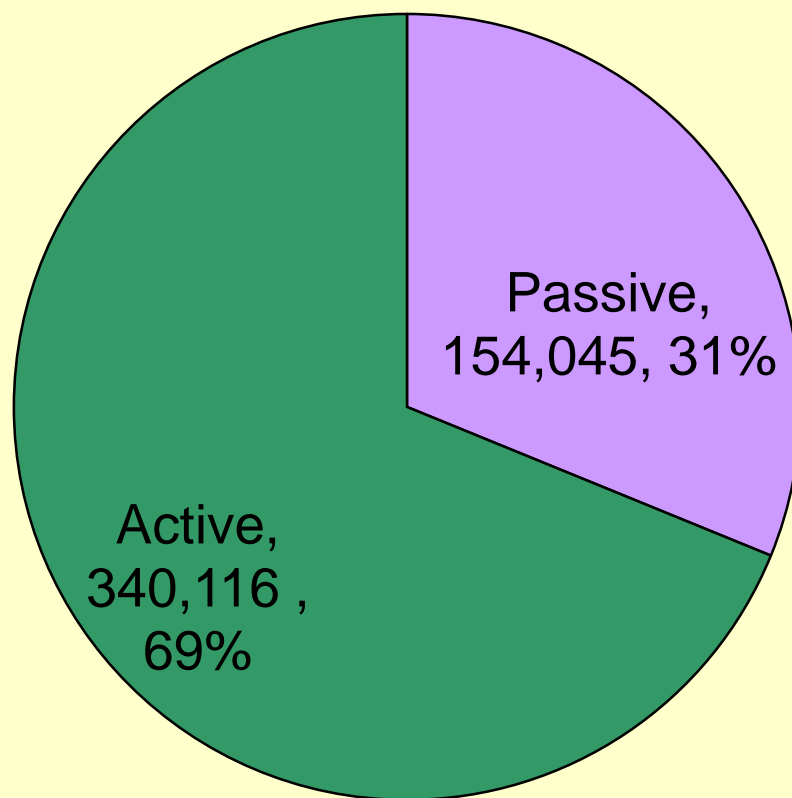
Project	Level	2030 Projections			2050 Projections		
		Baseline Demand (AF)	Volume Savings (AF)	% Savings	Baseline Demand (AF)	Volume Savings (AF)	% Savings
SWSI 1	Level 1 (Passive)	1,926,798	101,900	5%	NA		
	Level 2		170,533	9%	NA		
	Level 3		272,852	14%	NA		
	Level 4		443,385	23%	NA		
	Level 5		699,183	36%	NA		
SWSI 2	Low	1,925,000	287,000	15%	NA		
	Mid		372,000	19%	NA		
	High		459,000	24%	NA		
SWSI Levels Analysis	Low Passive (from 2000-2050)	1,741,379	102,007	5.9%	2,175,439	125,307	5.7%
	High Passive (from 2000-2050)		189,067	10.9%	2,187,500	211,938	9.7%
2010 SWSI update	Low	1,405,795	177,872	13%	1,761,128	311,423*	18%
	Medium		269,242	19%		494,161*	28%
	High		359,945	26%		675,567*	38%

* Includes passive conservation savings in the amount of 154,045 ac-ft that will occur between 2008 and 2050.

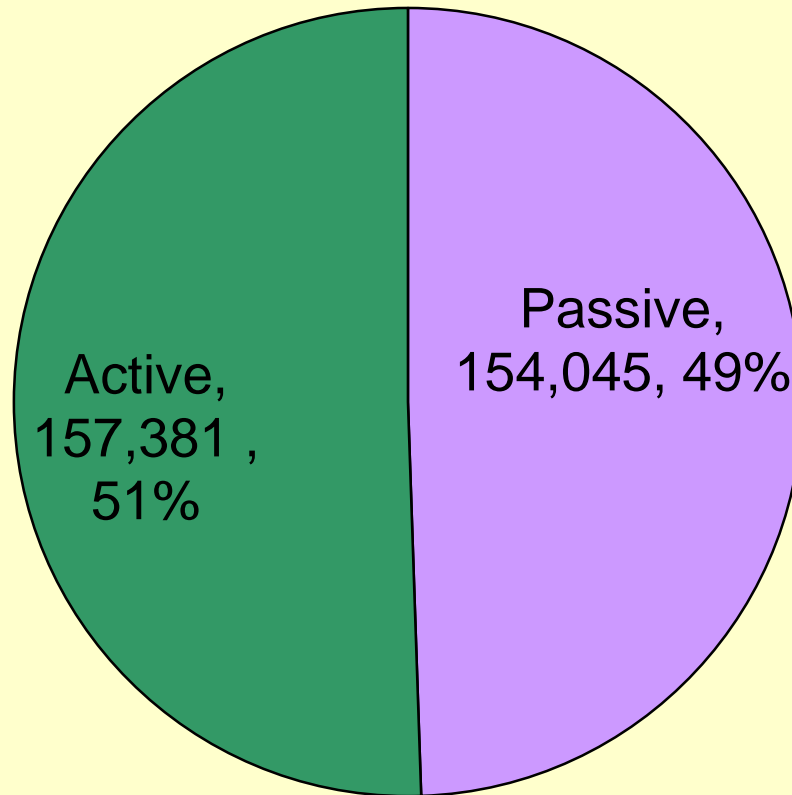
High Water Saving Strategy Passive and Active Savings at 2050



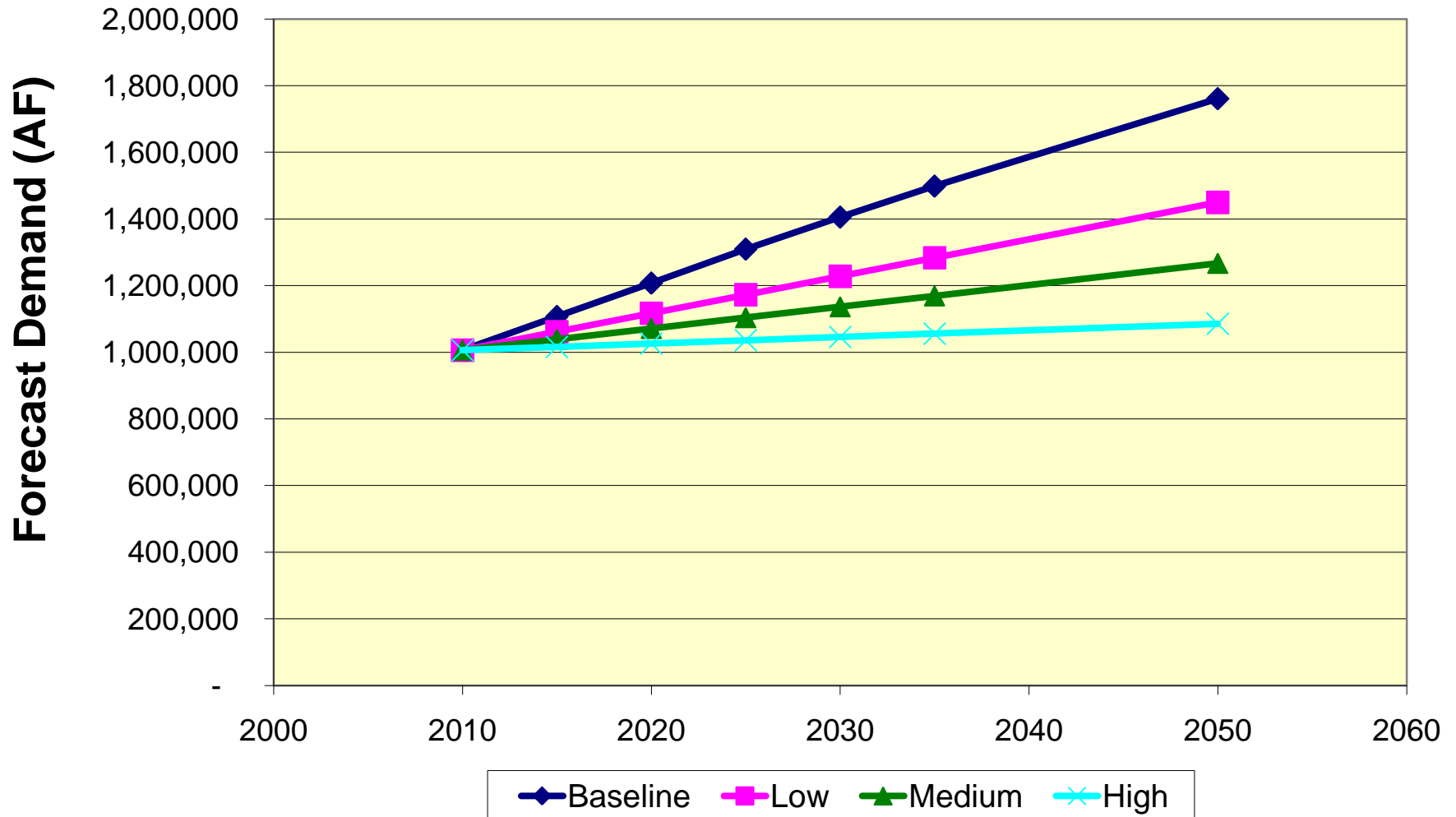
Medium Water Saving Strategy Passive and Active Savings at 2050



Low Water Saving Strategy Passive and Active Savings at 2050



Water Conservation Strategies and Demand Levels



Best Management Practices

Measure	Best Practice	Category or Sector Impacted
Full metering	BP 1	ALL
Conservation oriented rates	BP 1	ALL
Conservation oriented tap fees	BP 1	ALL
Integrated resource planning, goal setting and monitoring	BP 2	Utility
Water loss control	BP 3	Utility
Conservation coordinator	BP 4	ALL
Water waste ordinance	BP 5	ALL
Public information and education	BP 6	ALL
Landscape water budgets	BP 7	Outdoor irrigation
Rules and regulations for landscape design and installation	BP 8	Outdoor irrigation
Certification of landscape professionals	BP 8	Outdoor irrigation
Water efficient design, installation and maintenance practices for new and existing landscapes	BP 9	Outdoor irrigation
Irrigation efficiency evaluations	BP 10	Outdoor irrigation
Rules for new construction (residential and non-residential)	BP 11	ALL
High efficiency fixtures and appliances-Residential	BP 12	Residential
High efficiency fixtures and appliances-Non Residential	BP 12	CII
Residential water surveys and evaluations, targeted at high demand customers	BP 13	Residential
Specialized non-residential surveys, audits, and equipment efficiency improvements	BP 14	CII